

Istruzioni  
Instructions  
Instructions de montage  
Bedienungsanleitung  
Instrucciones



**Art. 3604F**



**Art. 3608F**



**Art. 3606F**



**Art. 3607F**



**Art. 3610**



**Art. 3613  
Art. 3614**



**FANTINI**  
RUBINETTI



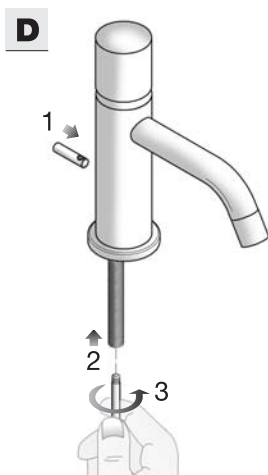
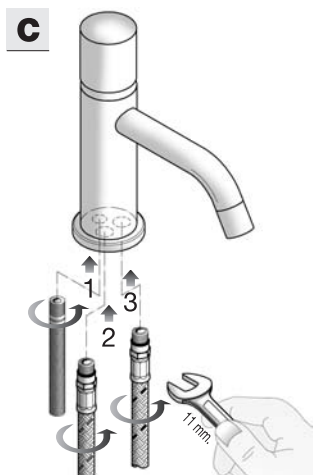
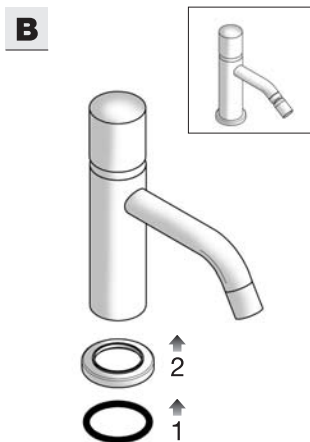
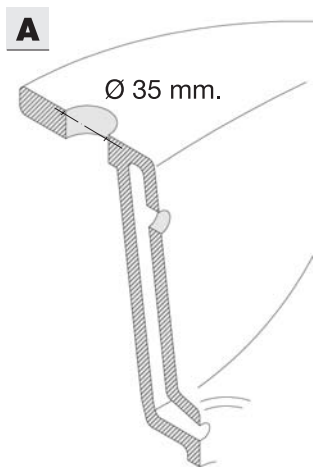
**Art. 3604F**

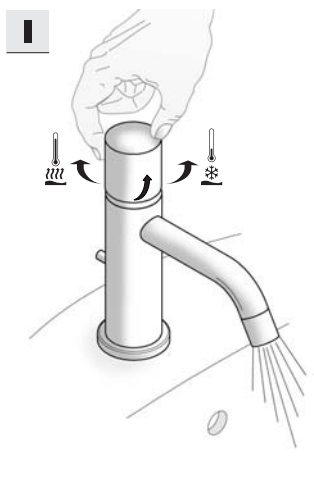
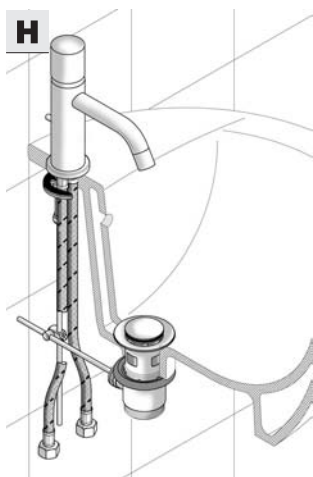
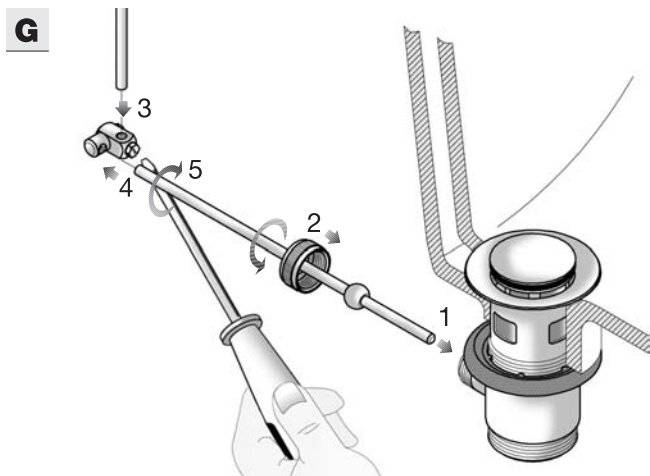
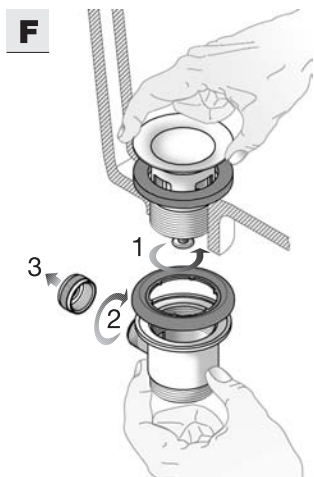
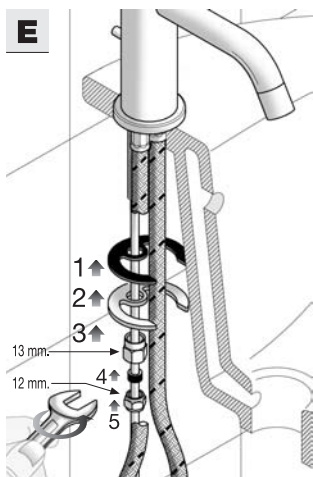
- Miscelatore lavabo
- Washbasin mixer
- Mitigeur lavabo
- Einhand-Waschtisch Mischer
- Monomando lavabo



**Art. 3608F**

- Miscelatore bidet
- Bidet mixer
- Mitigeur bidet
- Einhand-Bidet Mischer
- Monomando bidé







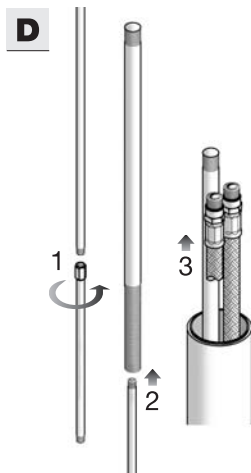
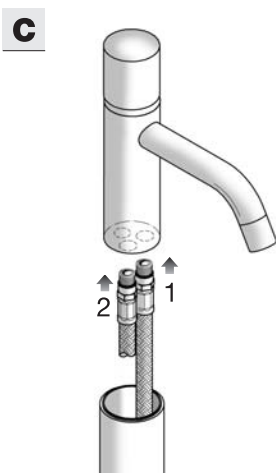
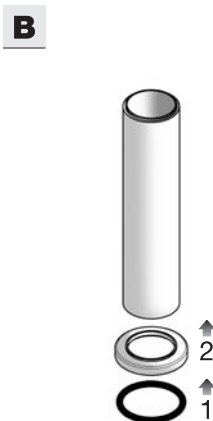
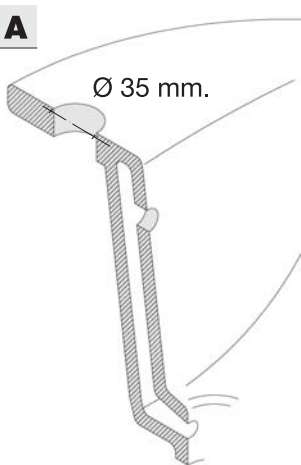
**Art. 3606F**

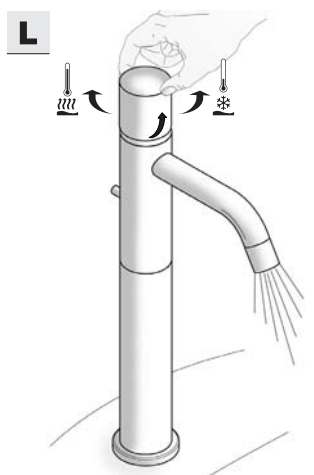
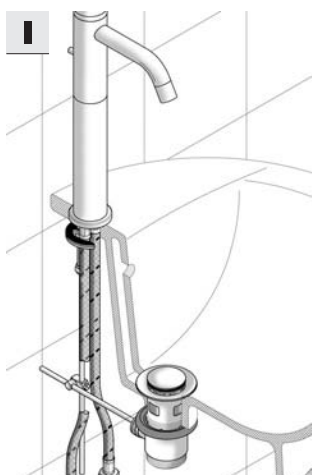
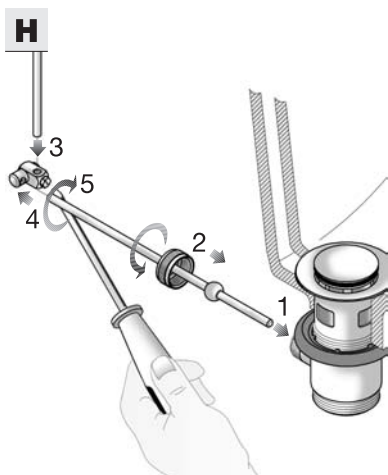
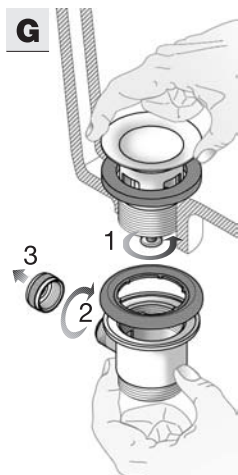
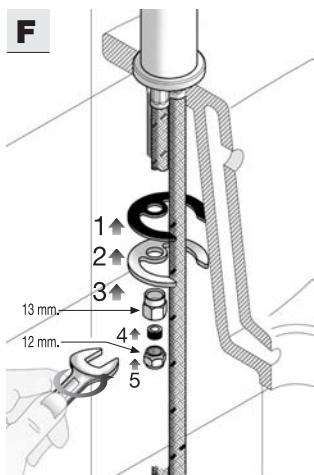
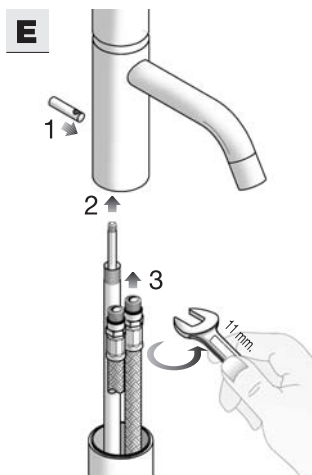
- Miscelatore lavabo alto con scarico e flessibili
- High single-ever washbasin mixer with drain with flexibles
- Mitigeur lavabo surélevé avec vidage avec flexibles souples
- Waschtisch hohe mischer mit ablaufgarnitur, mit flexschlauch, ohne griff
- Monomando lavabo alto con desagüe, con flexo, sin maneta



**Art. 3607F**

- Miscelatore lavabo alto con scarico e flessibili
- High single-ever washbasin mixer with drain with flexibles
- Mitigeur lavabo surélevé avec vidage avec flexibles souples
- Waschtisch hohe mischer mit ablaufgarnitur, mit flexschlauch, ohne griff
- Monomando lavabo alto con desagüe, con flexo, sin maneta







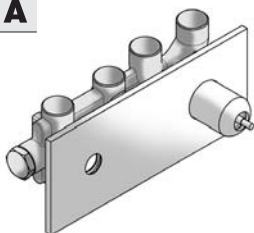
### Art. 3610

- Miscelatore monocomando lavabo a parete, con bocca cm 15
- Wall-mounted single-lever washbasin mixer with 15 cm spout
- Mitigeur lavabo mural, avec bec 15 cm
- Up-Einhebelwaschtisch Mischer mit Auslauf 15 cm
- Monomando lavabo a pared con cano 15 cm

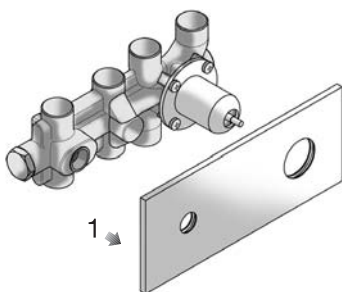
### Art. 3613/3614

- Miscelatore monocomando lavabo a parete, con bocca cm 20/25
- Wall-mounted single-lever washbasin mixer with 20/25 cm spout
- Mitigeur lavabo mural, avec bec 20/25 cm
- Up-Einhebelwaschtisch Mischer mit Auslauf 20/25 cm
- Monomando lavabo a pared con cano 20/25 cm

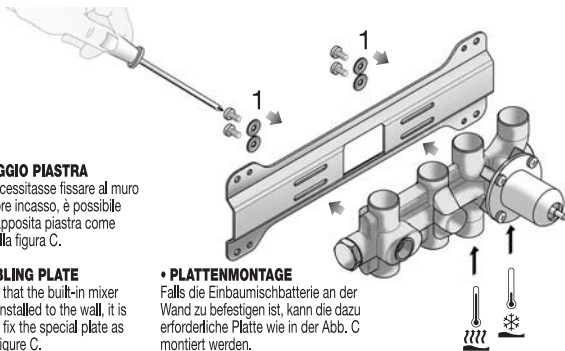
**A**



**B**



**C**



#### • MONTAGGIO PIASTRA

Qualora necessitasse fissare al muro il miscelatore incasso, è possibile montare l'apposita piastra come indicato nella figura C.

#### • ASSEMBLING PLATE

In the case that the built-in mixer should be installed to the wall, it is possible to fix the special plate as shown by figure C.

#### • MONTAGE DE LA PLAQUE

Dans le cas où il serait nécessaire de fixer au mur le mitigeur encastré, monter la plaque correspondante comme le montre la figure C.

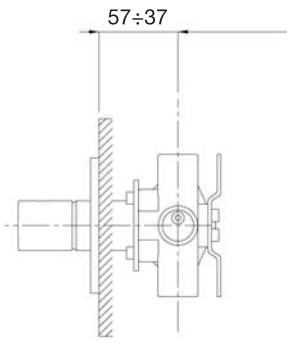
#### • PLATTENMONTAGE

Falls die Einbaumischbatterie an der Wand zu befestigen ist, kann die dazu erforderliche Platte wie in der Abb. C montiert werden.

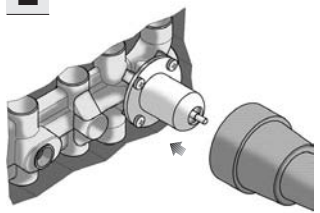
#### • MONTAJE PLACA

En el caso de que se necesitara fijar en la pared el mezclador empotrado, resulta posible montar la específica placa, cómo indicado en la figura C.

**D**

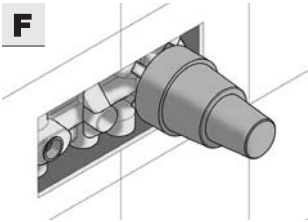


**E**

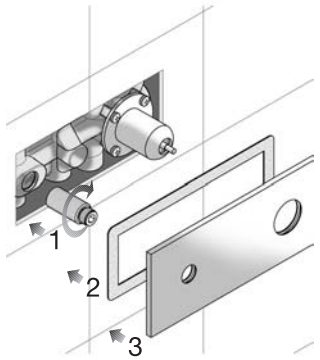


- Protezioni
- Protections
- Protections
- Schutz
- Protecciones

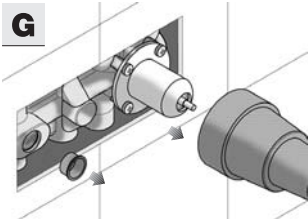
**F**



**H**



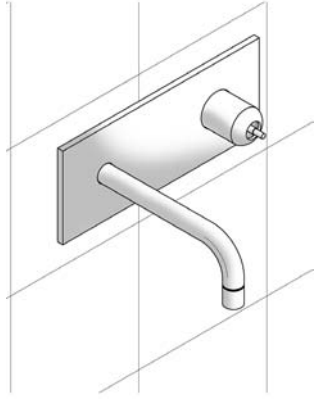
**G**



**I**



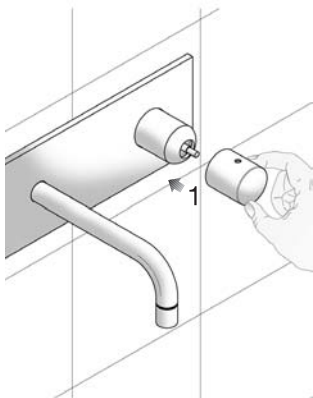
**L**



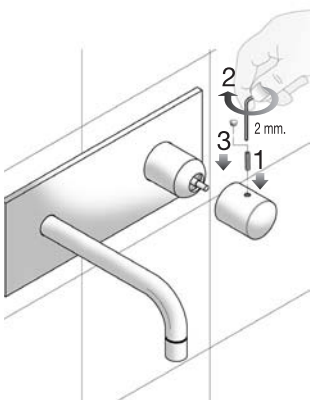


- Maniglia
- Handle
- Manette
- Hebel
- Maneta

**A**



**B**



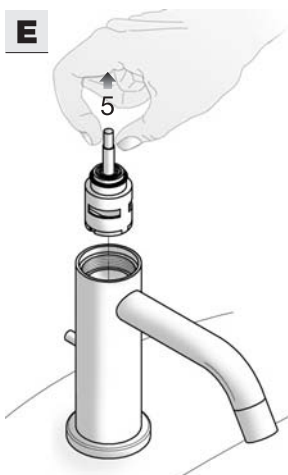
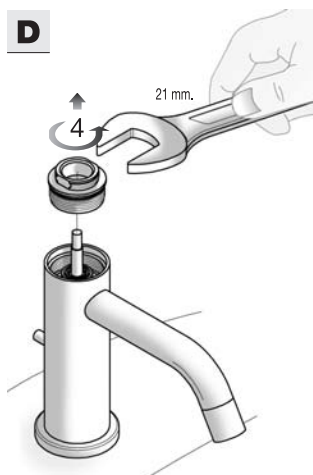
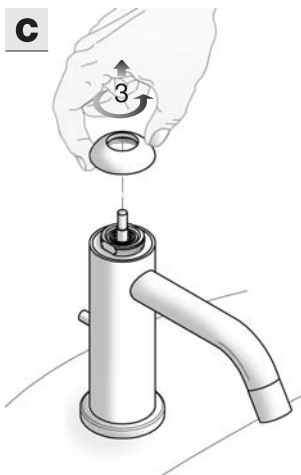
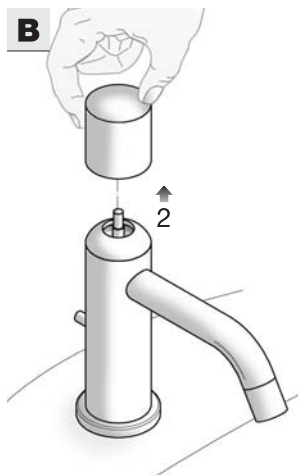
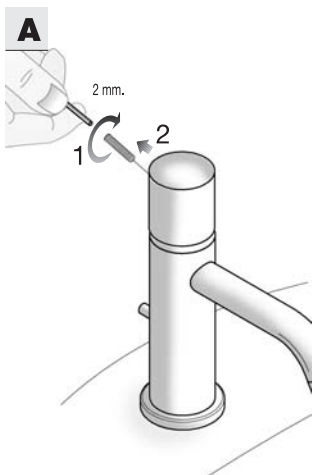
**C**





**Art. 3604F - Art. 3608F**  
**Art. 3606F - Art. 3607F**

- Sostituzione cartuccia
- Cartridge replacement
- Remplacement de la cartouche
- Auswechseln der Kartusche
- Sostitución del cartucho

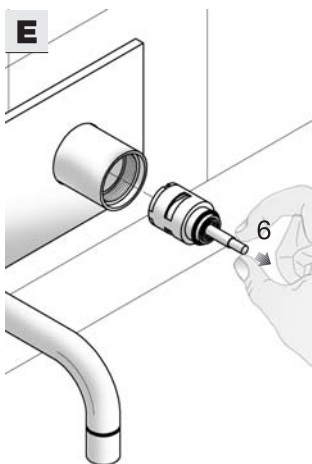
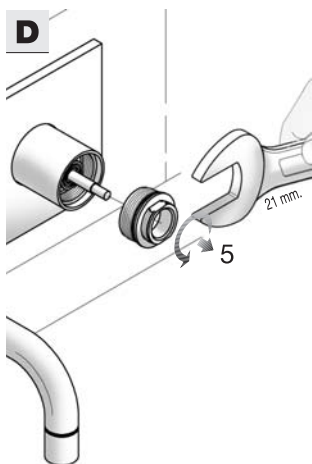
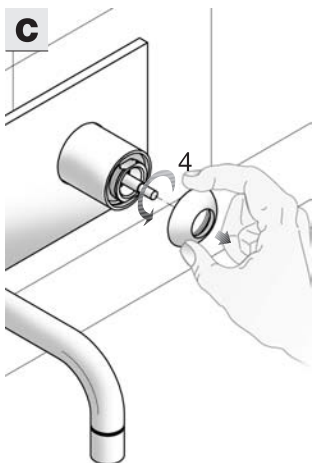
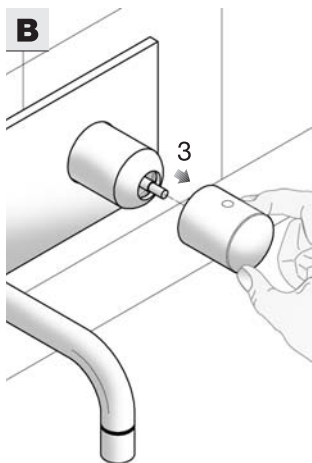
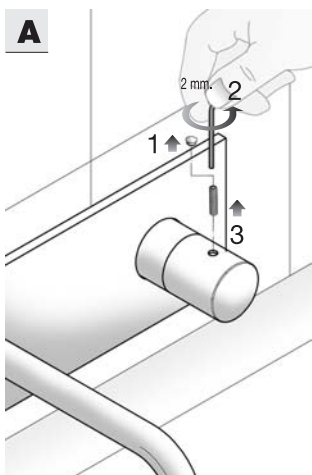




**Art. 3610 - Art. 3613**

**Art. 3614**

- Sostituzione cartuccia
- Cartridge replacement
- Remplacement de la cartouche
- Auswechseln der Kartusche
- Sostitución del cartucho



## RUBINETTERIA MONOCOMANDO

### Dati tecnici

PRESSIONE MINIMA .....	0.5 BAR
PRESSIONE MASSIMA .....	10 BAR
PRESSIONE DI ESERCIZIO	
CONSIGLIATA .....	1-5 BAR
TEMPERATURA MASSIMA .....	80°C
TEMPERATURA MASSIMA	
CONSIGLIATA .....	65°C
DIFFERENZA MASSIMA DI	
PRESSIONE IN ARRIVO	
(CALDA - FREDDA).....	1.5 BAR

### Applicazioni

Questi miscelatori possono essere utilizzati con accumulatori di acqua calda a pressione o con scaldabagni istantanei.

### Avvertenze

Prima di installare il miscelatore è necessario spurgare in modo accurato le tubazioni di alimentazione. Al termine dell'installazione è consigliato smontare l'aeratore e lasciare correre l'acqua per qualche minuto. Ricordarsi che l'acqua calda deve essere SEMPRE collegata al tubetto o flessibile di SINISTRA.

## EIINHABELMISCHER

### Technische Daten

MINIMUM DRUCK .....	0.5 BAR
HÖCHSTE DRUCK .....	10 BAR
EMPFEHLENER DRUCK .....	1-5 BAR
HÖCHSTE WASSER	
TEMPERATUR .....	80°C
EMPFEHLENER HÖCHSTE	
WASSERTEMPERATUR .....	65°C
HÖCHSTE EINKOMMENDE	
DRUCKSUNTERSCHIED	
(WARM - KALT).....	1.5 BAR

### Betriebsanweisungen

Diese Mischer sind sowie für Heisswasserspeicher als auch für Durchlaufzähler geeignet.

### Note

Die Verbindungsröhre vor der Montage sorgfältig putzen. Nach der Montage schrauben Sie den Strahlregler aus und lassen Sie das Wasser fließen. Das warme Wasser muß immer mit dem linken Röhrchen oder Flexschlauch verbunden werden.

## SINGLE LEVER MIXER

### Technical characteristics

MINIMUM PRESSURE .....	0.5 BAR
MAXIMUM PRESSURE .....	10 BAR
RECOMMENDED	
WORKING PRESSURE .....	1-5 BAR
MAXIMUM WATER	
TEMPERATURE .....	80°C
MAXIMUM WATER	
TEMPERATURE RECOMMENDED .....	65°C
MAXIMUM IN-LET PRESSURE	
DIFFERENCE (HOT - COLD).....	1.5 BAR

### Operating instructions

These mixers can be used with cumulos boilers or instantaneous water heaters.

### Warning

The supplying pipes must be carefully cleaned before installation.

On completing installation it is advisable to dismantle the aerator and let the water run for a few minutes. Remember that the hot water supply must ALWAYS be connected to the tube on the LEFT.

## GRIFERIA MONOMANDO

### Datos Técnicos

PRESSION MINIMA .....	0.5 BAR
PRESSION MÁXIMA .....	10 BAR
PRESSION DE TRABAJO	
ACONSEJADA .....	1-5 BAR
TEMPERATURA MÁXIMA .....	80°C
TEMPERATURA MÁXIMA	
ACONSEJADA .....	65°C
DIFERENCIAL MÁXIMA DE	
PRESIÓN DE ENTRADA	
(CALIENTE - FRÍA).....	1.5 BAR

### Aplicaciones

Estos monomandos pueden ser utilizados con acumuladores de agua caliente a presión.

### Advertencias

Antes de conectar el monomando es necesario purgar correctamente la instalación hidráulica de alimentación de cualquier impureza que pueda tener. Una vez terminada la colocación se aconseja desmontar el aireador y dejar correr el agua algún minuto. Recuerde que el agua caliente debe ser SIEMPRE conectada al tubo o flexo de la IZQUIERDA.

## ROBINETTERIE MONOCOMMANDE

### Caractéristiques Techniques

PRESSION MINIMUM .....	0.5 BAR
PRESSION MAXIMUM .....	10 BAR
PRESSION OPTIMALE	
DE SERVICE .....	1-5 BAR
TEMPÉRATURE MAXIMUM .....	80°C
TEMPÉRATURE MAXIMUM	
OPTIMALE .....	65°C
DIFFÉRENCE MAXIMUM DE	
PRESSION D'ARRIVÉE (CHAUD-FROID).....	1.5 BAR

### Mode d'emploi

Ces mitigeurs peuvent être utilisés avec accumulateurs d'eau chaude à pression ou avec des chauffe-eau instantanés.

### Note

Il est indispensable que les raccords d'alimentation soient purgés avant la mise en place de l'appareil.

Après le montage il est conseillé de dévisser l'aérateur et faire couler de l'eau pendant quelques instants. Se rappeler que l'eau chaude doit être TOUJOURS liée au petit tuyau ou au flexible de GAUCHE.



FRATELLI FANTINI S.p.A.

28010 Pella (NO) - Via M. Buonarroti, 4

Telefono + 39 0322.969127 r.a. - Telefax + 39 0322.969530

e-mail: [fantini@fantini.it](mailto:fantini@fantini.it) [www.fantini.it](http://www.fantini.it)

